

THANK YOU FOR CHOOSING ROBOTIQ

This step-by-step guide will allow you to install and test your Wrist Camera on a UR3, UR5 or UR10 Universal Robots with a CB3.1 controller.



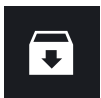
1. WHAT IS SUPPLIED

Standard upon delivery of a Wrist Camera kit for Universal Robots:

Wrist Camera (RWC-CAM-001)
 Tool plate (RWC-TOOL-062)
 Calibration board (ACC-CALIB-BOARD)
 Color background (ACC-TEACH-BACK)
 4 ports USB hub splitter (ACC-USB-4-HUB)
 USB license dongle (ACC-USB-DONGLE)
 16 Gb USB stick (ACC-USB-16G)
 Necessary hardware



2. WHAT YOU NEED



3. GET THE LATEST

➔ Visit support.robotiq.com

- Download and unzip the content of **UCC-X.X.X** directly on the provided 16 Gb USB stick (ACC-USB-16G).
- Get the latest instruction manual.



4. MOUNTING

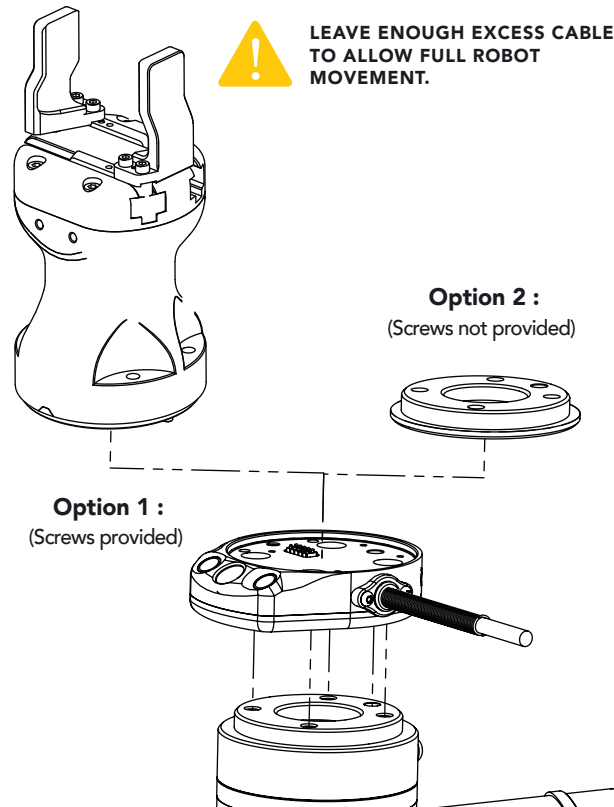
- Place the Wrist Camera (RWC-CAM-001) on the robot arm. Align the dowel pin.

➔ Option 1 :

- Fix the camera on the robot arm using the provided M6 X 12mm (RWC-UR) screws and lock washers.
- Mount the gripper directly on the Wrist Camera using the provided M5 X 35mm (CPL-C3-B) screws and lock washers.

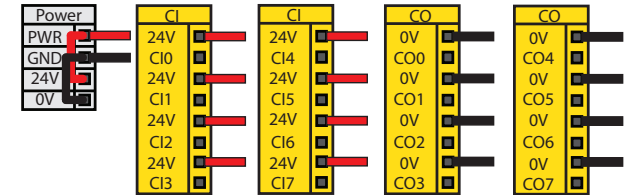
➔ Option 2 :

- Place the tool plate (RWC-TOOL-062) on the camera. Align the dowel pin.
- Fix the end effector on the robot arm, through the tool plate and the camera, using M6 screws. The use of a dowel pin for alignment is recommended.



5. WIRING

- Connect the red wire of the device cable to a 24V pin of the robot controller.
- Connect the black wire of the device cable to a 0V pin of the robot controller.



- Connect the 4-port USB hub (ACC-USB-4-HUB) to the robot controller.
- Connect the Wrist Camera's USB cable in the USB hub.
- Connect the USB license dongle (ACC-USB-DONGLE) in the USB hub.



6. SOFTWARE INSTALLATION

- Have the 16 Gb USB stick (ACC-USB-16G) at hand that contains the **UCC-X.X.X** uncompressed content (see step 3).
- With the controller on, insert the 16 Gb USB stick in the 4-port USB hub.
- From the PolyScope home page, tap **Setup Robot**.
- Go to **URCaps Setup** and tap the + sign.
- Open **Robotiq_Wrist_Camera-X.X.X.urcap** from the USB stick.
- Tap the **Restart** button.
- When PolyScope reopens, go to **Program Robot** and tap the **Installation** tab.
- Choose **Camera** and go to **Dashboard**.
- Verify the system status and tap **Install**.
- Wait for the vision server to be installed and for the vision system to start.
- In order to use another USB stick, reboot the robot controller.



DO NOT REMOVE THE 16 GB USB STICK AND THE USB LICENSE DONGLE, EVEN AFTER THE INSTALLATION HAS BEEN COMPLETED.



7. TEST WRIST CAMERA

- From a robot program, go to the **Installation** tab and then select **Camera**.
 - Select the **Dashboard** tab and verify that the vision system is running.
 - Go to the **Camera** tab.
 - The output image from the camera will appear.
- ➔ For help with troubleshooting, visit support.robotiq.com.



8. SNAPSHOT POSITION

- From your robot program, go to the **Installation** tab.
- Go to **Features** and define a new point.
- Rename it if applicable and check the **Variable** checkbox.
- Set the point at any position in the robot's workspace.
- Go to **Camera** and then to the **Snapshot Positions** tab.
- Select the point created and tap **Define** to launch the **Snapshot position wizard**.



9. TEACH OBJECT

- From your robot program, go to the **Structure** tab.
 - Go to the **URCaps** submenu.
 - Tap the **Cam Locate** button.
 - Go to the **Command** tab and tap **Teach object** to launch the object teaching wizard.
 - You will need to select the previously taught snapshot position.
- ➔ Visit support.robotiq.com to get the latest instruction manual and further information on how to program with the Wrist Camera.



Where automation Pros share
their know-how and get answers.
dof.robotiq.com

New product has a 1 year warranty from the above date.
Refer to your product instruction manual for details.

support.robotiq.com

support@robotiq.com
T: 1.418.380.2788 option 3

October 2018
V1.6



WRIST CAMERA

QUICK START GUIDE

For installation on
CB-Series
Universal Robots

